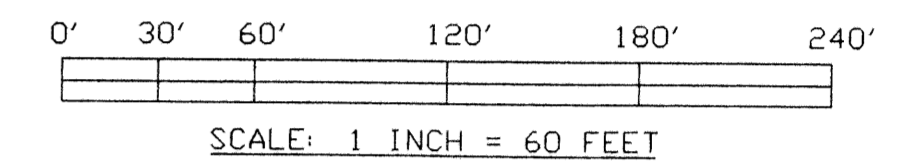
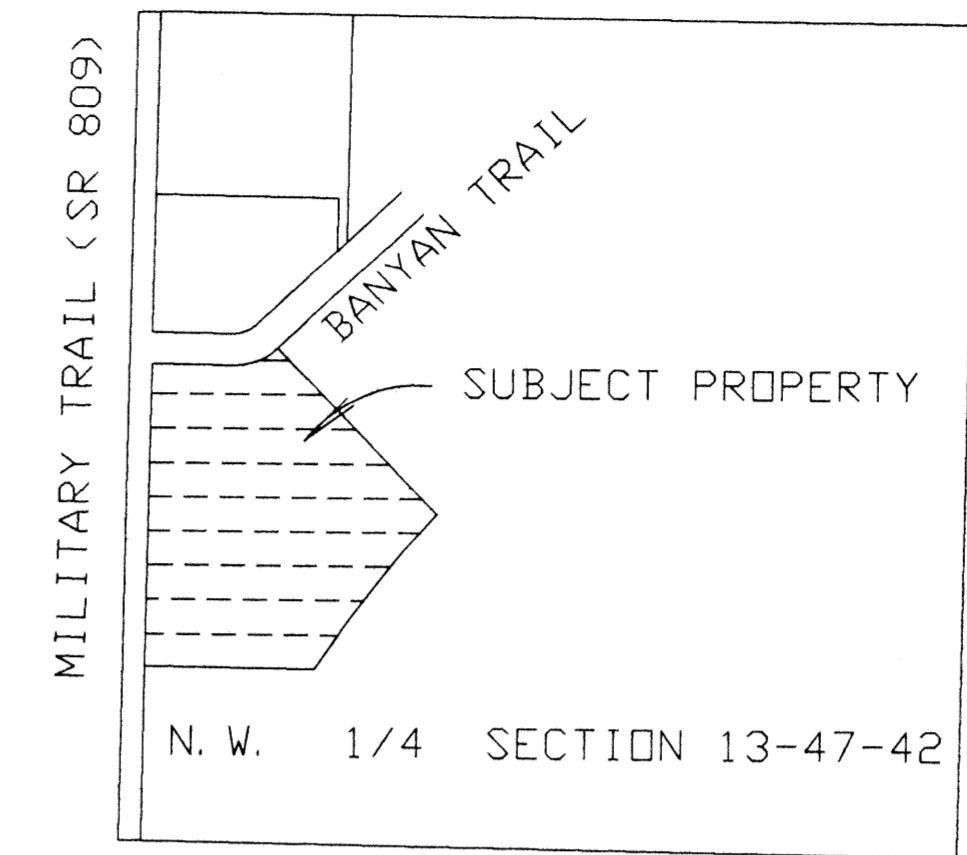


# HIGHWOODS SQUARE

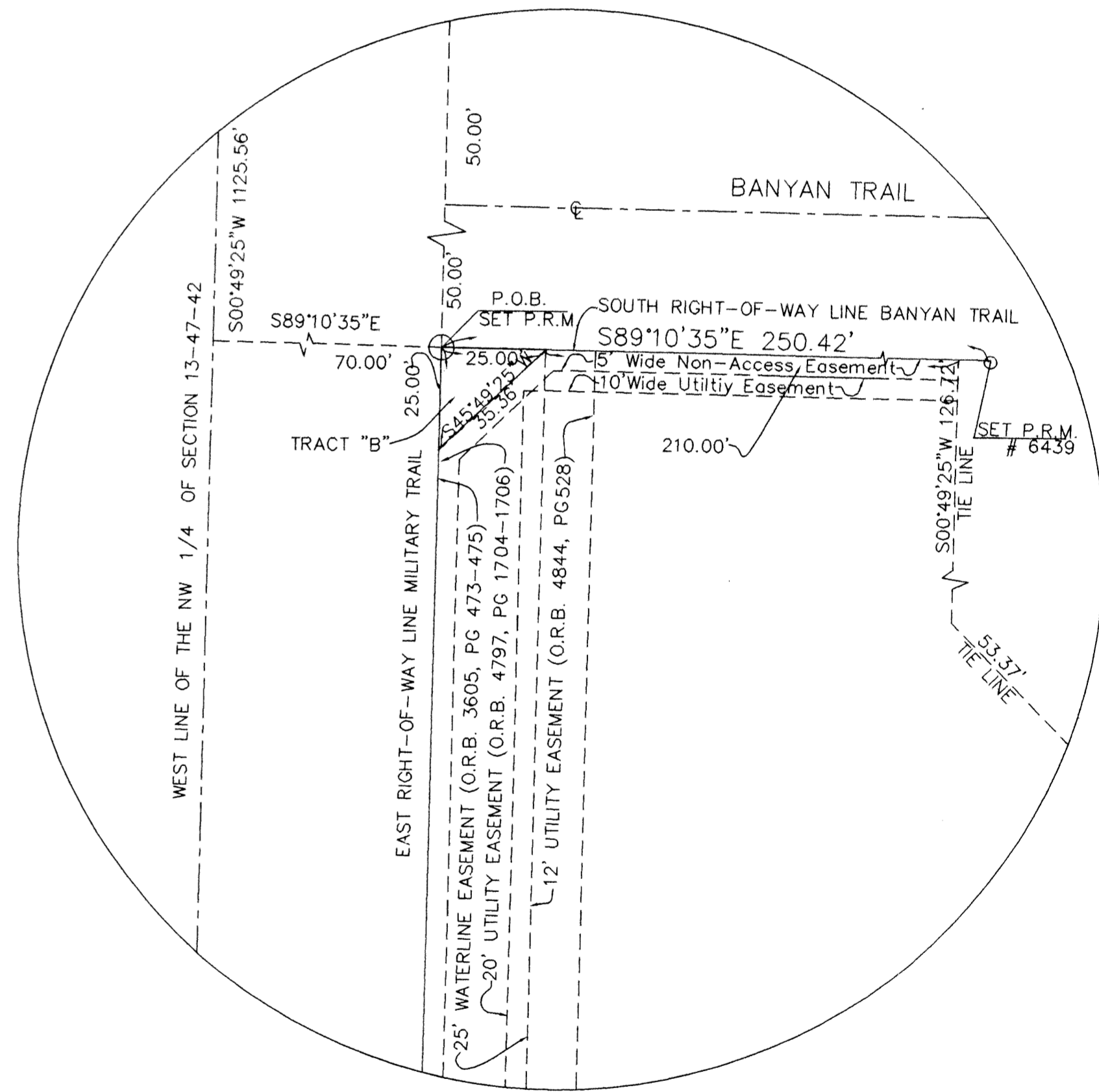
A PORTION OF THE NORTHWEST ONE QUARTER OF SECTION 13, TOWNSHIP 47 SOUTH, RANGE 42 EAST, IN THE CITY OF BOCA RATON, PALM BEACH COUNTY, FLORIDA.

29  
STATE OF FLORIDA  
COUNTY OF PALM BEACH  
THIS PLAT WAS FILED FOR  
RECORD AT \_\_\_\_\_ M.  
THIS \_\_\_\_\_ DAY OF \_\_\_\_\_  
A. D. AND DULY RECORDED  
IN PLAT BOOK \_\_\_\_\_ ON  
PAGES \_\_\_\_\_ AND \_\_\_\_\_  
DOROTHY H. WILKEN  
CLERK CIRCUIT COURT  
BY \_\_\_\_\_  
DEPUTY CLERK

SHEET 2 OF 2



LOCATION SKETCH  
NOT TO SCALE



**NOTES:**

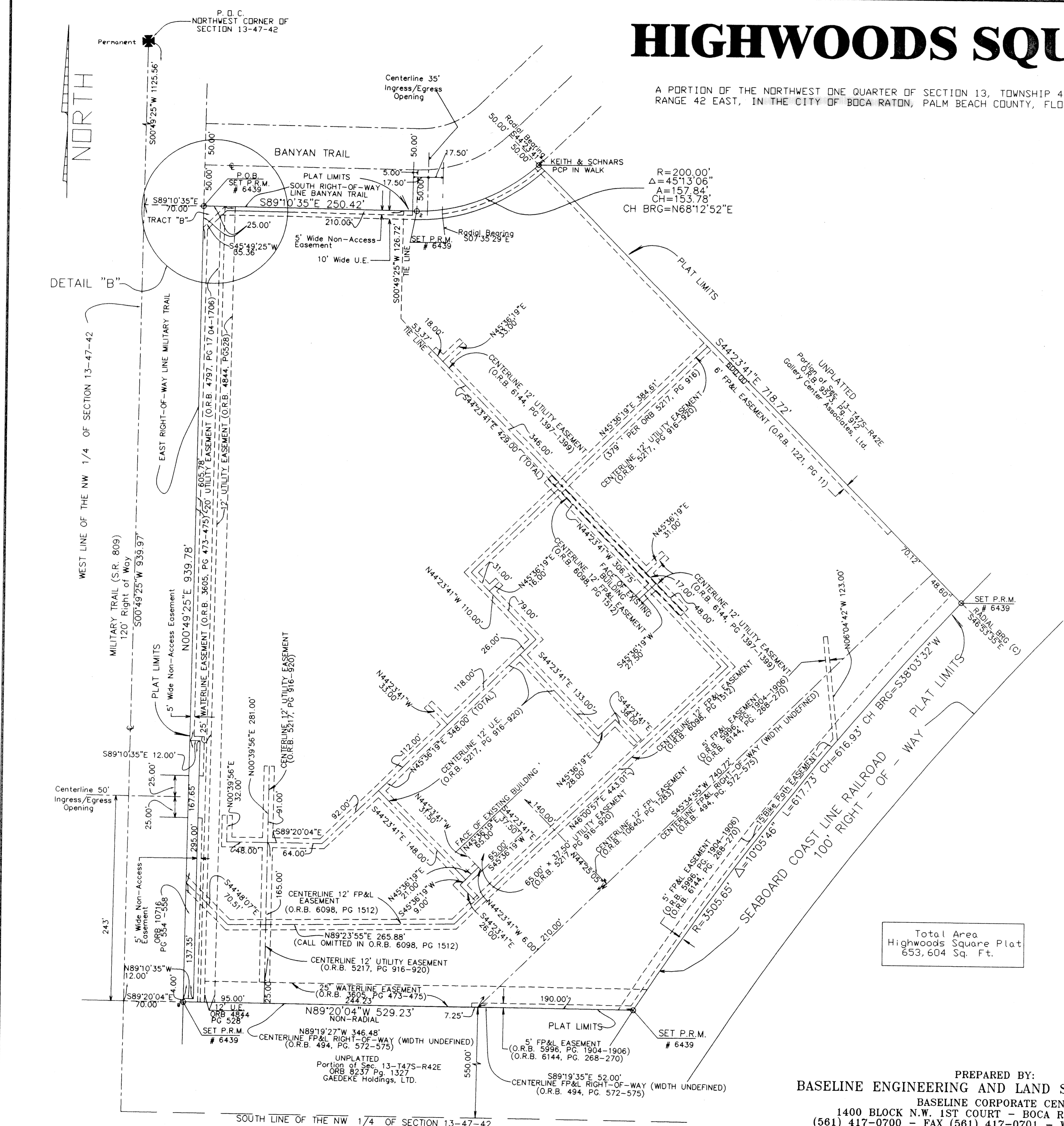
- (1) P. R. M. : PERMANENT REFERENCE MONUMENT (SET P. R. M. #6439 UNLESS OTHERWISE NOTED.)
- (2) P. C. P. : PERMANENT CONTROL POINT
- (3) BEARINGS ARE BASED ON THE NORTHLINE OF THE NORTHWEST ONE-QUARTER (NW 1/4) OF SECTION 13, TOWNSHIP 47 SOUTH, RANGE 42 EAST, BEARING SOUTH 89°33'00" EAST AS SHOWN ON THE PLAT OF "TWIN LAKE" RECORDED IN PLAT BOOK 60, AT PAGE 198, OF THE PUBLIC RECORDS OF PALM BEACH COUNTY, FLORIDA.
- (4) O. R. B. : INDICATES OFFICIAL RECORDS BOOK
- (5) P. B. : INDICATES PLAT BOOK
- (6) PG. : INDICATES PAGE
- (7) D. D. T. : INDICATES DEPARTMENT OF TRANSPORTATION
- (8) C. : INDICATES CENTERLINE
- (9) U. E. : INDICATES UTILITY EASEMENT
- (10) Δ : INDICATES CENTRAL ANGLE (DELTA)
- (11) A : INDICATES ARC LENGTH
- (12) R : INDICATES RADIUS
- (13) P. O. B. : INDICATES POINT OF COMMENCEMENT
- (14) P. O. B. : INDICATES POINT OF BEGINNING
- (15) S. F. : INDICATES SQUARE FEET
- (16) NO BUILDINGS OR ANY KIND OF STRUCTURE SHALL BE PLACED ON UTILITY OR DRAINAGE EASEMENTS.
- (17) NO TREES OR SHRUBS SHALL BE PLACED ON DRAINAGE EASEMENTS.
- (18) LANDSCAPING ON UTILITY EASEMENTS SHALL ONLY BE WITH THE APPROVAL OF ALL UTILITIES OCCUPYING SAME.

Total Area  
Highwoods Square Plat  
653,604 Sq. Ft.

PREPARED BY:  
**BASELINE ENGINEERING AND LAND SURVEYING, INC.**

BASELINE CORPORATE CENTER  
1400 BLOCK N.W. 1ST COURT - BOCA RATON, FLA. 33432  
(561) 417-0700 - FAX (561) 417-0701 - WATS (800) 696-5286

SUBDIVISION: \_\_\_\_\_  
 BOOK: 04  
 FLOOD ZONE: \_\_\_\_\_  
 ZONING: \_\_\_\_\_  
 QUAD: \_\_\_\_\_  
 SE: \_\_\_\_\_  
 TAZ: \_\_\_\_\_  
 PUD NAME: City of Boca Raton



SOUTH LINE OF THE NW 1/4 OF SECTION 13-47-42

WEST LINE OF THE NW 1/4 OF SECTION 13-47-42

NORTH

NORTH